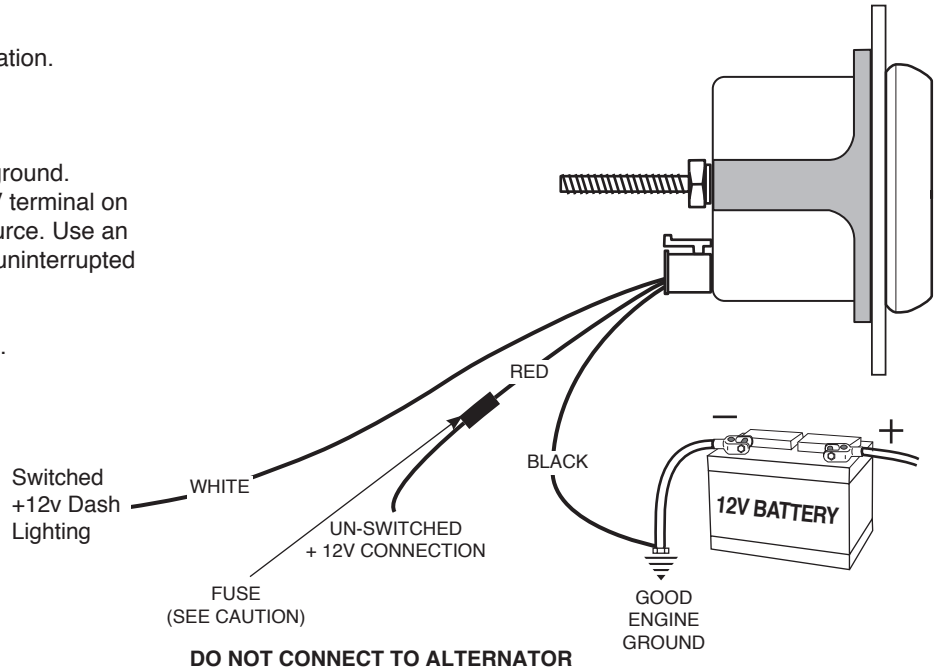




Installation

1. Check that you have all parts required for installation.
2. Disconnect the negative (-) battery cable.
3. Gauge mounts in a 52.4mm hole. Use supplied brackets and nuts to secure to dash.
4. Attach black wire from harness to good engine ground.
5. Attach red wire from harness to a constant +12V terminal on ignition switch or other +12V constant power source. Use an un-switched power source. Instrument requires uninterrupted power for continuous operation.
6. Attach white wire to dash lighting or switchable +12V light source to control instrument backlight.
7. Reconnect negative (-) battery cable.

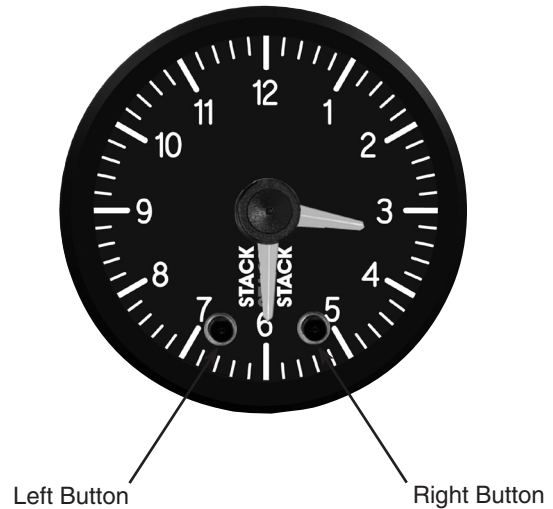


CAUTION!
As a safety precaution, the +12V terminal of this product should be fused before connecting to 12V. We recommend using a 1 Amp, automotive fast-acting type cartridge fuse.

Setting the Time

Use the two buttons on the face of the gauge to set the time. The left button moves the hands counter clockwise. The right button moves the hands clockwise.

A momentary press on either button moves the hands one minute. After pressing and holding either button for a couple seconds, the hands will begin moving at a much faster speed, moving the minute hand one hour in three seconds.



SERVICE

For service send your product to STACK in a well packed shipping carton. Please include a note explaining what the problem is along with your phone number. Please specify when you need the product back. If you need it back immediately mark the outside of the box "PRIORITY REPAIR," and STACK will service product within two days after receiving it. (£5.00 charge will be added to the cost of "PRIORITY REPAIR.") If you are sending product back for Warranty adjustment, you must include a copy (or original) of your sales receipt from the place of purchase.

12 MONTH LIMITED WARRANTY

STACK, Ltd. warrants to the consumer that all STACK products will be free from defects in material and workmanship for a period of twelve (12) months from date of the original purchase. Products that fail within this 12 month warranty period will be repaired or replaced at STACK's option to the consumer, when it is determined by STACK, Ltd. that the product failed due to defects in material or workmanship. This warranty is limited to the repair or replacement of parts in the STACK instruments. In no event shall this warranty exceed the original purchase price of the STACK instruments nor shall STACK, Ltd. be responsible for special, incidental or consequential damages or costs incurred due to the failure of this product. Warranty claims to STACK must be transportation prepaid and accompanied with dated proof of purchase. This warranty applies only to the original purchaser of product and is non-transferable. All implied warranties shall be limited in duration to the said 12 month warranty period. Breaking the instrument seal, improper use or installation, accident, water damage, abuse, unauthorized repairs or alterations voids this warranty. STACK, Ltd. disclaims any liability for consequential damages due to breach of any written or implied warranty on all products manufactured by STACK.

FOR COMPLETE OPERATIONS GUIDE PLEASE VISIT: WWW.STACKLTD.COM

Stack Ltd. Wedgwood Road Bicester OX26 4UL UK

T : +44 (0) 1869 240404

F : +44 (0) 1869 245500

E : sales@stackltd.com